



Innovation
With a Human Touch

4F-1, 236, Fu-Te 2nd Rd., His Chih,

Taipei Hsien, 221, Taiwan

TEL:886-2-6616-6692 · 2694-6687

FAX:886-2-2694-6875 · 2694-5097

X252_X380 & MG380Hybrid X motor and auto focus cable changing process

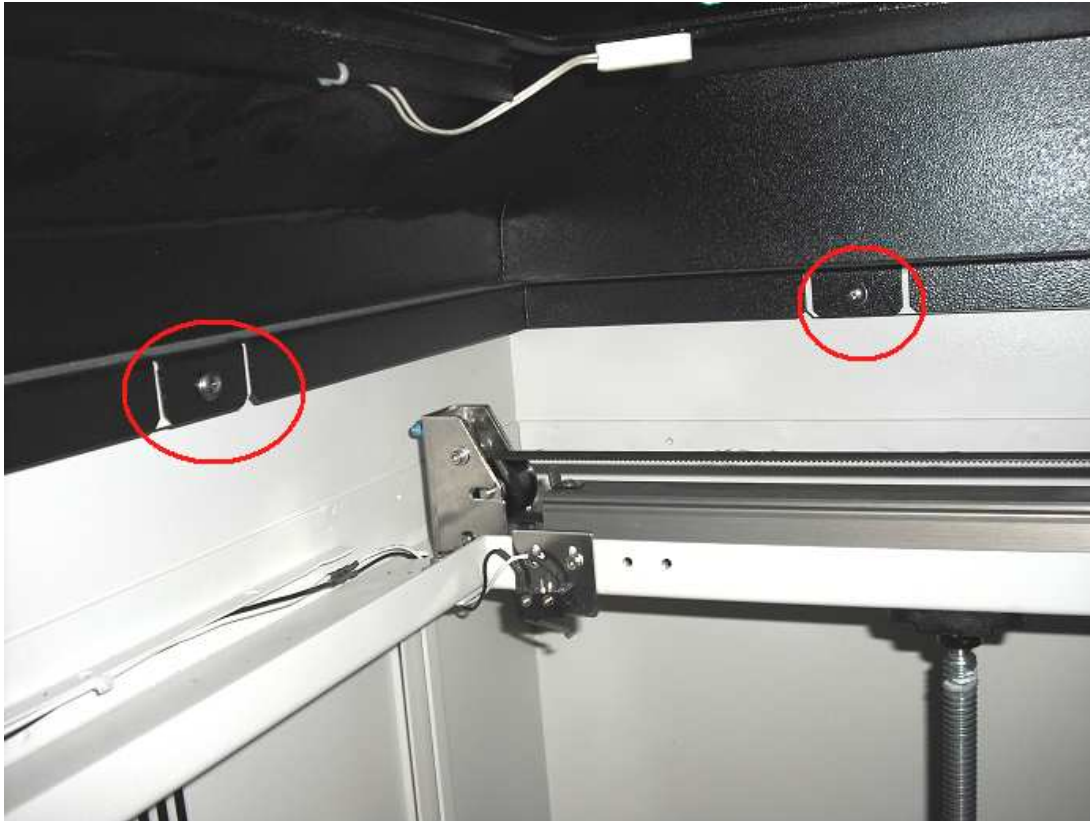
Version: 1.0

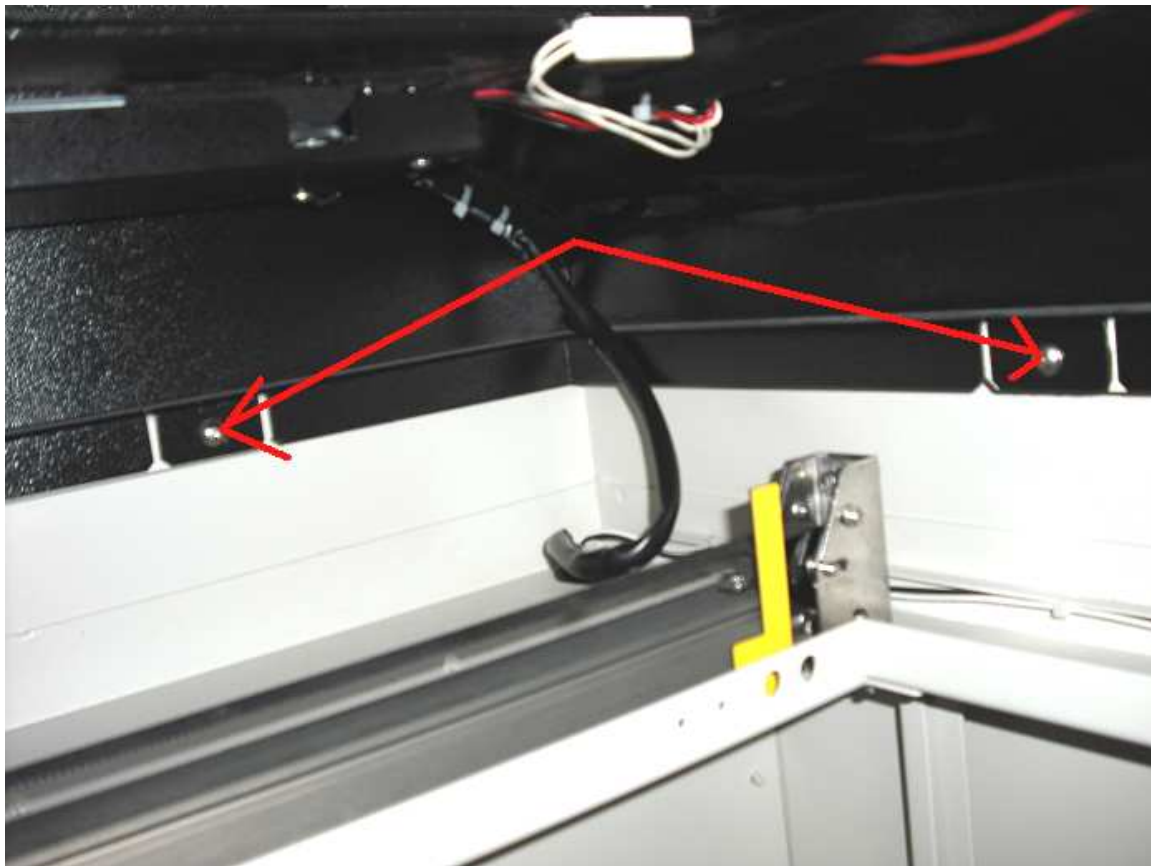
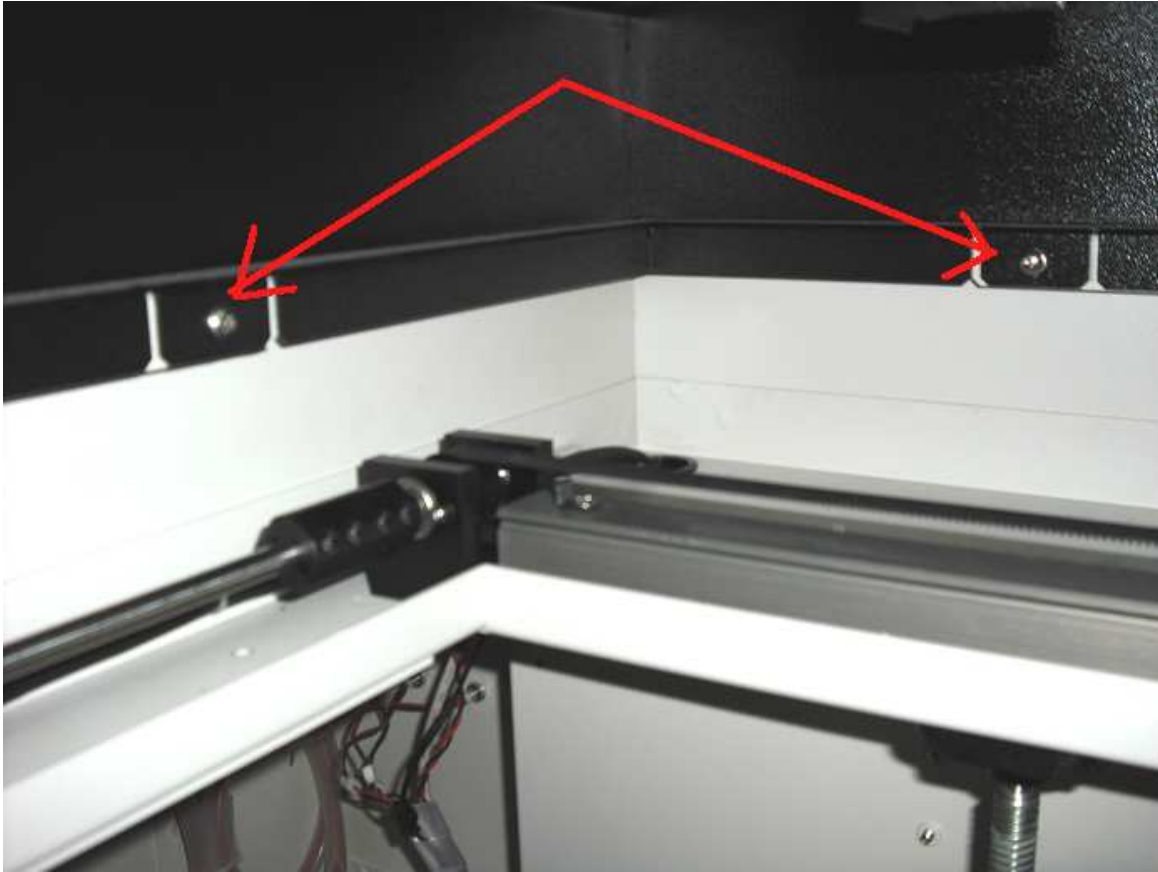
May 20, 2014

Revision History :

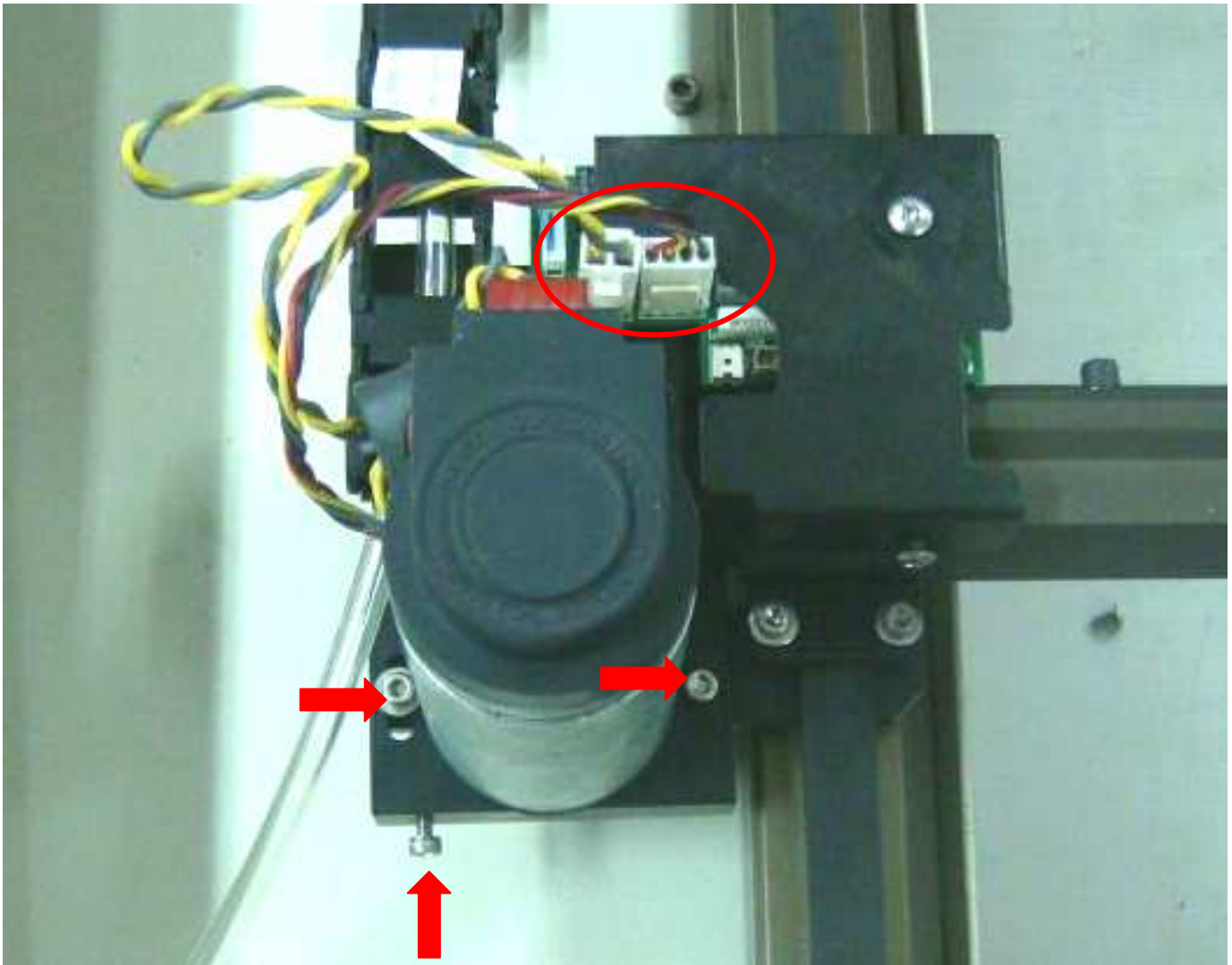
Version	Date	Page	CONTENTS
1.0	May, 20 2014		First release

1. Open the top window, and loosen eight screws inside, then you can remove the whole top cover. (please refer to below pictures)

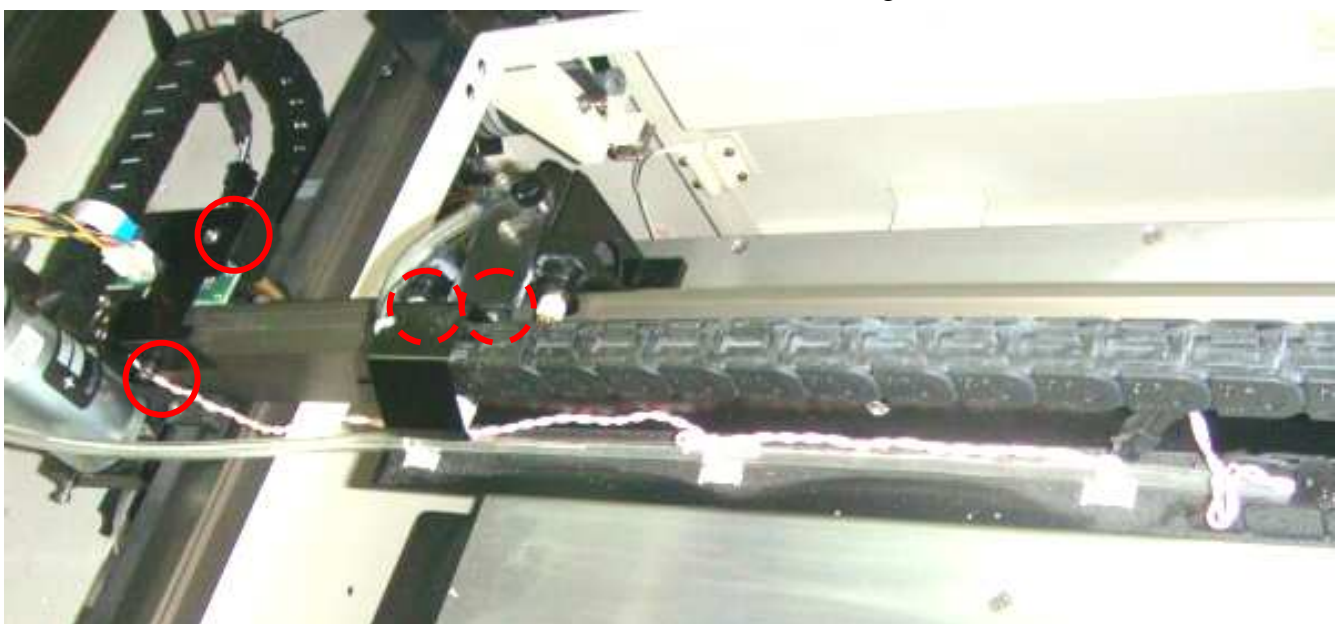




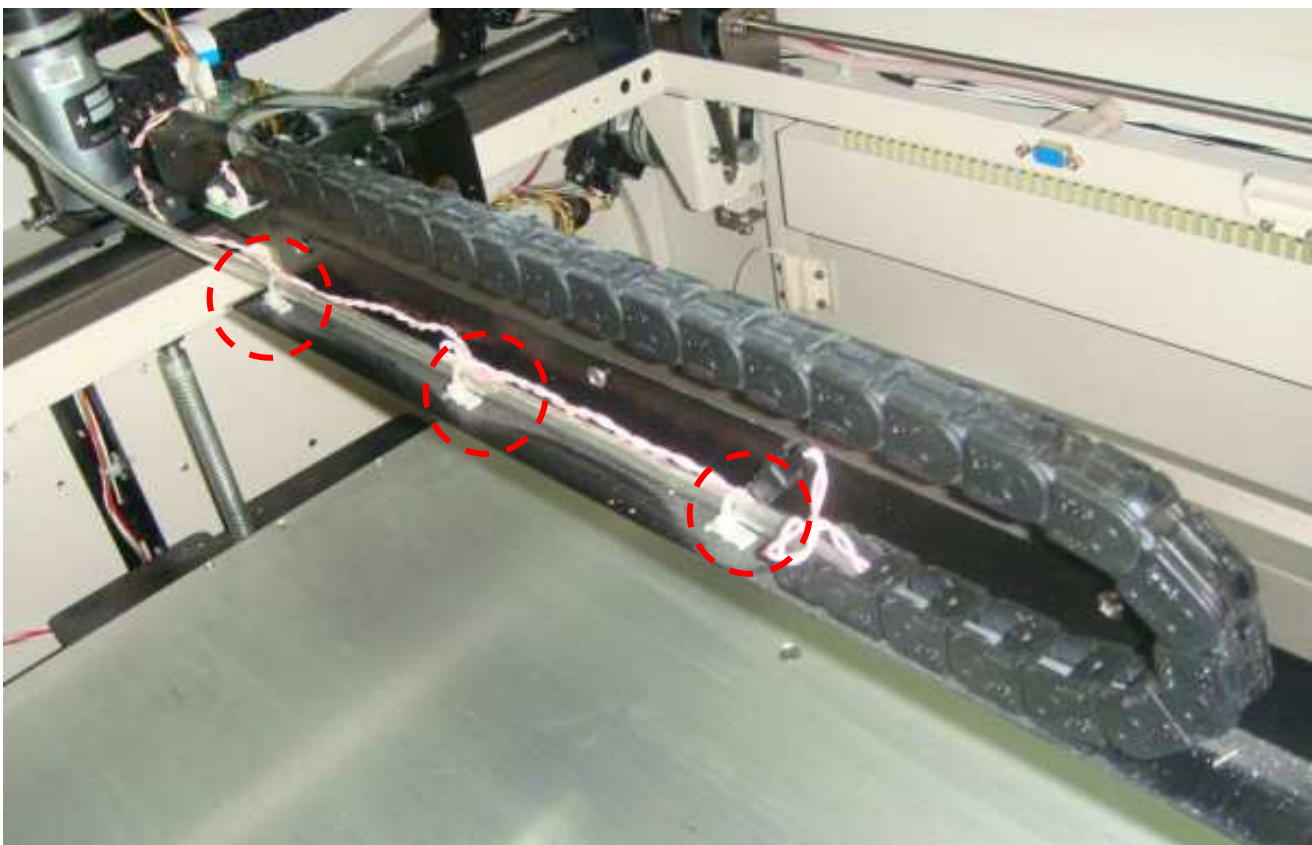
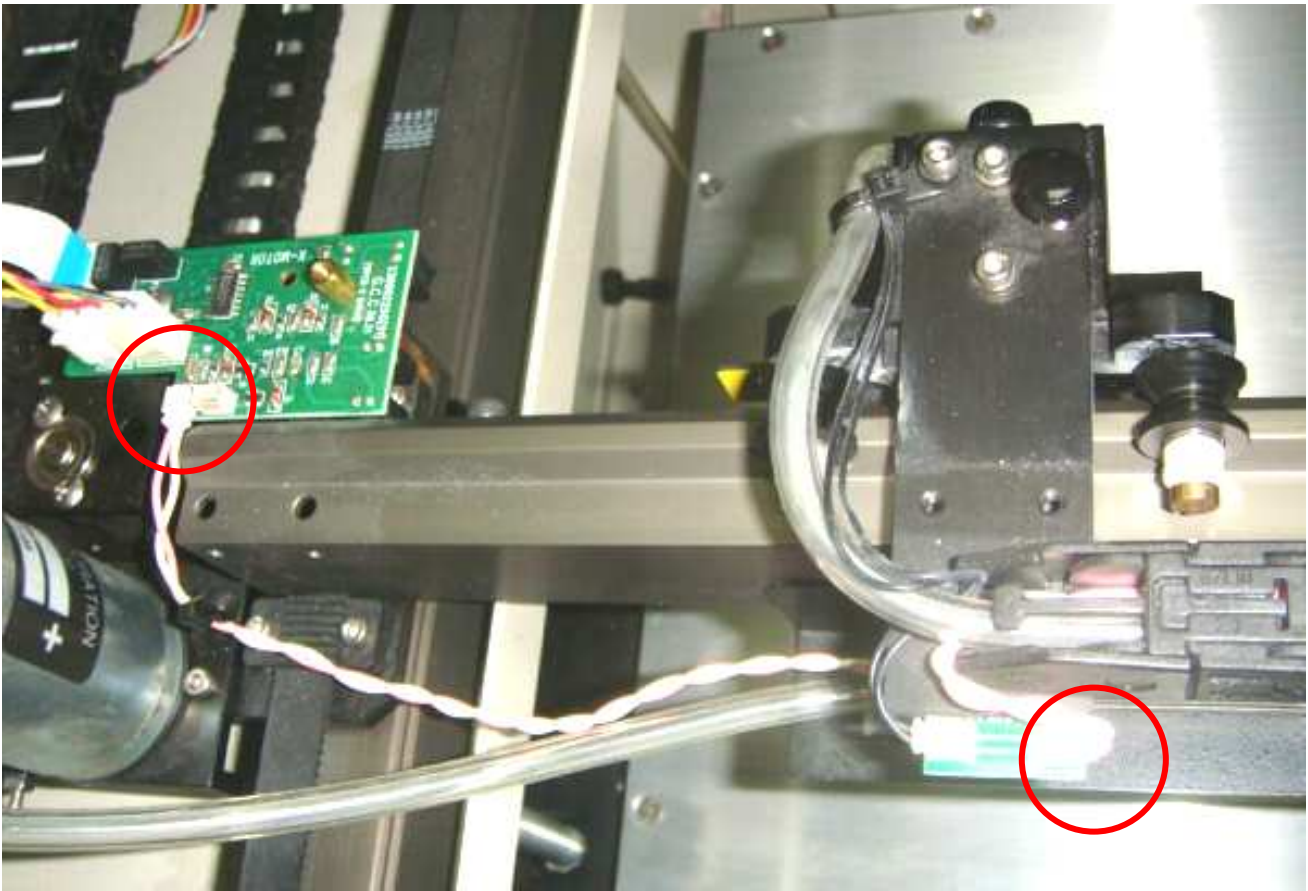
2. Dismount 3 screws of x motor (red arrow below) and the x motor cable be removed and changed.



3-1. Dismount 2 screws of x motor cover and 2 screws of carriage cover.



- 3-2. For changing auto focus cable, first remove the auto focus cable from x motor pcb (see red circle below).
- 3-3. On lens carriage side, remove the auto focus cable also (it is tight, so use tweezers will be helpful).



3-4. Pull out some joint will be easier to change auto focus cable.

